

WHAT'S THE

SCORE?

SCORE GROUP NEWSLETTER JULY 2008

5 YEARS AT THE GLEN

On 12 August 2003 Score Energy entered into a new era with the first in house performance test of an Avon gas generator within the newly completed GLEn (Ground Level Engine) Test house. Over the past 5 years, the GLEn has been evolving rapidly with the capability of testing not only the Avon, but also TB 4000/5000, Olympus, and Tornado gas turbines to an ever increasing customer base.



Continued on page 3

CONTENTS

| | |
|-----|---|
| 1 | 5 Years at the GLEN |
| 2 | Contents |
| 3 | PDVSA Visit to Peterhead |
| 4 | Celebrating Our Nature |
| 5 | Leeds - Control Valve Technical & Sales Support Service |
| 6-7 | CSL Summer Article/Scottish Connections |
| 8 | New Machinery/Craft Competition |
| 9 | Team Photos—From around the world |
| 10 | Rally Sur del Lago |
| 11 | Meet the Apprentice |
| 12 | Meet the Director |
| 13 | Cycle to Work Scheme/Thank You |

PDVSA VISIT TO PETERHEAD

Earlier this year Score Energy Ltd was visited by Petróleos de Venezuela S.A., the state-owned corporation of the Republic of Venezuela, which is responsible for the exploration, production, refining, transport and sale of hydrocarbons.

They were here to review North Sea oil production, its links to our fishing heritage and to build knowledge of both countries cultures and differences.

The Venezuelan and British Embassies organised the 2 visits for 2 weeks in the UK.

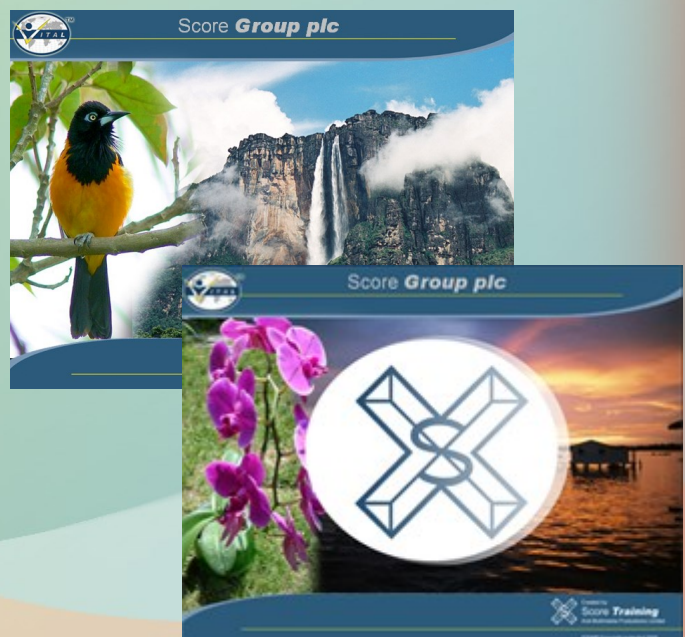
The first visit for this year was on January 25th, when we organized a celebration of the birthday of Scots poet Robert Burns, so it was fitting that the Score Chairman organized a Burns Supper where traditional dress of tartans and kilts were worn by all the guests. The menu was traditional Scottish food with haggis, neeps and tatties

The second visit was on March 31st, during which we organized various activities including a tour of old Aberdeen and Peterhead surrounding area and visits to local oil services companies.

PDVSA and Venezuela continue to be an important customer of Score Energy and these visits not only maintain but assist in strengthening these solid relationships.



Charles Ritchie (left) and Adriana Marchese making the presentation



Part of the Venezuelan presentation

SCORE CELEBRATES

AN ENHANCED LOCAL ENVIRONMENT

We at Score Group plc in Peterhead take our environmental responsibilities seriously and on our sites in Peterhead much of our land is given over to wildlife.



We have been planting trees and shrubs since 1990, when we planted a 25 acre woodland at Richmondhill. Since then, we have planted around the bunds at Glenugie, 30 acres within our Wellbank site and other sites in the local area.

This work has been completed under the excellent guidance of our specialised consultant in this field, Simon Jacyna of the Scottish Agricultural College (SAC) and it has all been carried out and maintained to a higher standard than is required by the statutes of the Planning Authorities. Over these twenty years, we have planted in excess of 12,000 bulbs, 48,000 trees and shrubs and created three ponds.



Our land areas in Peterhead can be cold and windswept. These maturing woodlands and screen plantings improve the environment for our staff, as well as providing food and shelter for a wide range of animals, birds and wildflowers. The most vigorously growing trees are now over twenty feet tall.



Within the woods, you may see roe deer, rabbits, hares, foxes, stoats and weasels and possibly even badgers. Bird species in the area include Chaffinch, Blue and Great Tit, Dunnock, Wren, Blackbird, Woodpigeon, Meadow Pipit, Linnet, Yellowhammer and Tree Sparrow.

The heavy clay soils and salt laden winds limit the range of species that grow well here. We have not restricted ourselves to using native species, but also grow many naturalised species that are tolerant of the difficult growing conditions. These vigorous species such as sycamore and spruce establish the woodland structure and provide shelter for the more sensitive or slower growing species.

Tree species we have planted include ash, oak, sycamore, alder, willow and Sitka spruce. On bunds and on the woodland edges we have planted many shrubs at close spacing. These include hazel, hawthorn, sea buckthorn, roses and elderberry. We have also planted rare species and orchids. Their flowers and fruits are an important food supply for a wide range of birds and insects. Their dense thickets are also excellent nesting cover for many bird species and nests can often be spotted during the winter months.

All of our plantings include some Wych Elm trees. This used to be a common species in north east Scotland but has now been severely affected by the spread of Dutch Elm disease. The relative isolation of some of our woods may help the long-term survival of this species.

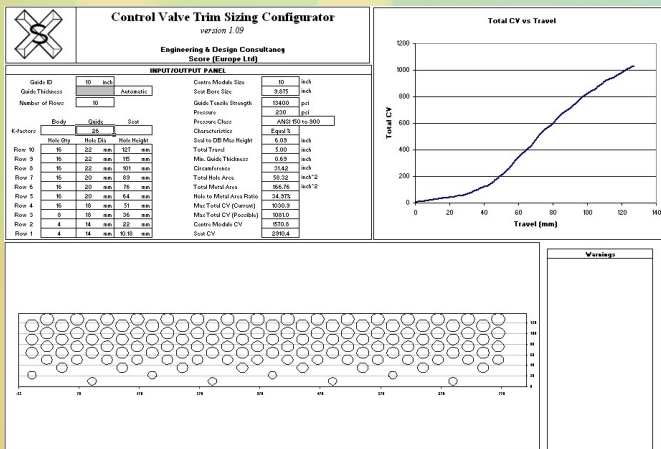
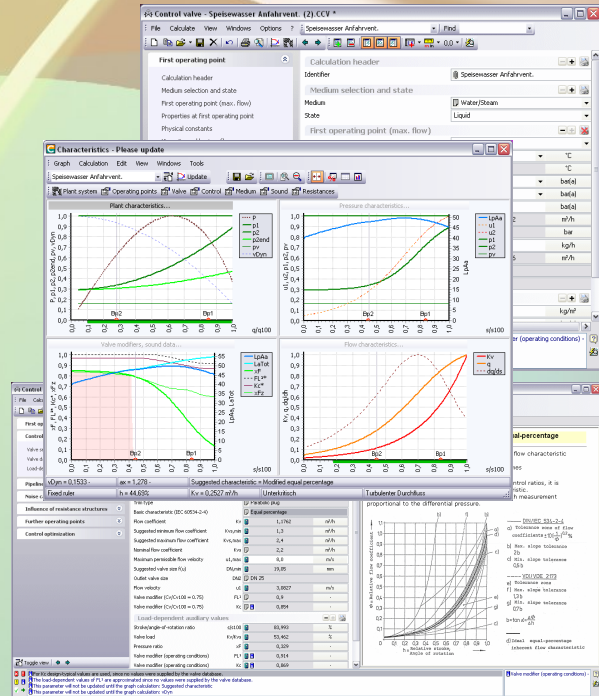
For the benefit of all, we would encourage all local companies to adopt a similar caring approach to our delicate environment

Score Group plc – Proud to enhance and maintain our environment !.



LEEDS—CONTROL VALVE TECHNICAL AND SALES SUPPORT SERVICE

Score's control valve overhaul, repair and supply service is enhanced by a team of technical control valve engineers who provide application reviews, troubleshooting and failure analysis support. Their vast experience is strengthened with the use of manufacturers sizing software and independent software (CONVALTM) allowing detailed analysis of control valve problem areas such as cavitation, flashing, noise levels, energy dissipation and vibration and erosion potential. Once highlighted, these problems are eradicated using combinations of upgraded component designs, superior materials and alternative products.



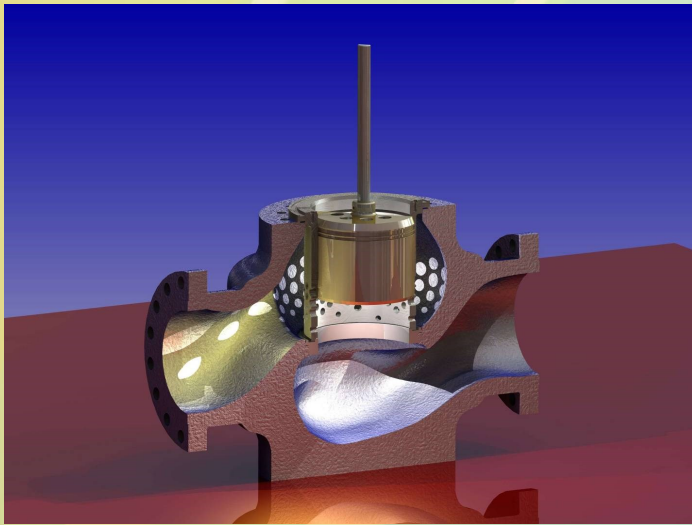
New to the control valve problem solving portfolio is the in-house developed Control Valve Trim Sizing Configurator (CVTSC) which allows cage hole patterns to be designed quickly and effectively, substantially speeding up the process

The CVTSC, developed using Excel Visual Basic, allows the hole structure to be inputted while the software methods perform a substantial amount of calculations to determine the capacity Cv and characteristic curve. The hole structure can be quickly modified to achieve the desired results. The CVTSC now allows hole patterns to be designed in less than 30 minutes. The results are exported to a geometric 3D modelling package in order to produce the manufacturing drawings.

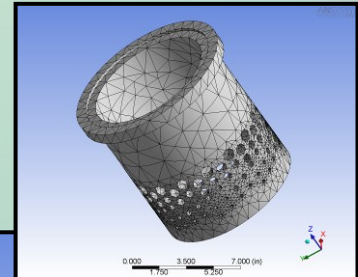


LEEDS—CONTROL VALVE TECHNICAL AND SALES SUPPORT SERVICE

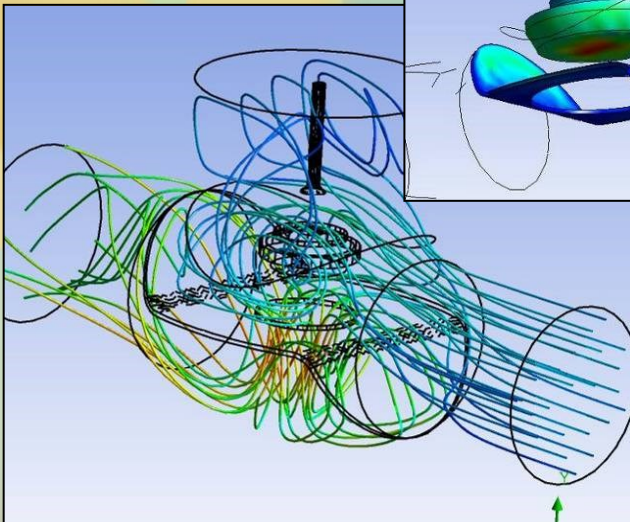
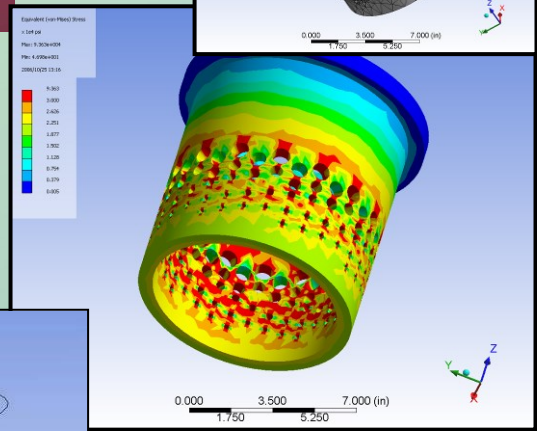
Combined with Score's extensive control valve stock inventory, we now have the ability to design and manufacture new valve internal trims in order to supply our clients with solutions in record time. In June a valve was selected and picked from stock, overhauled, fitted with a new trim designed and manufactured in-house, witness tested, packed and shipped out to the Saudi Aramco Rabigh Refinery in Saudi Arabia in 4 weeks.



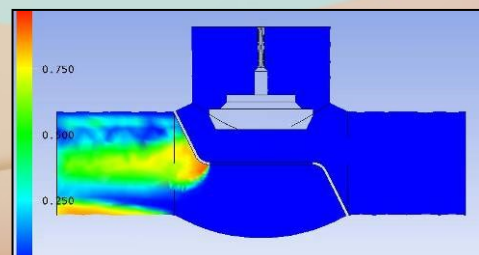
3D solid model of a new control valve trim designed, manufactured and installed into a 10" #300 duplex stainless steel stock valve for Score Eastern Canada.



Further enhancing our services is the Finite Element Analysis (FEA) and Computational Fluid Dynamics (CFD) section of our Engineering Group. The suite of packages combined with expert users allows the modelling and analysis of complex mechanical and fluid coupling problems in order to recommend and effect solutions.



CFD analysis of a control valve showing fluid flow paths, velocity, cavitation and the corresponding fluid pressure on the solid parts.



CSL SUMMER ARTICLE

SCORE ARTICLE SUMMER 2008

As per our last article Constant Systems exhibited at the PEGS summit in Boston in the last week of April. Since then we have attended a further show - The American Crystallographic Association (ACA) Annual Meeting based in Knoxville, Tennessee. Protein Crystallography is the method with which scientists can study what a protein's atomic composition is. Basically what a protein actually looks like and how it is built! As a first time exhibitor we enjoyed interest from the attendees who were eager to find out what our technology comprised of. As the name suggests it was focused on the American market rather than previous international meetings we have attended.

Following this meeting we are now preparing to attend our final show of the year, the Protein Society Annual Meeting held mid-July in San Diego, California. Unlike the ACA meeting above this meeting attracts a larger percentage of international guests. The show boasts nearly 1,000 attendees all focused on the study of proteins, which is what the majority of our customer base break open their cells to study.

Following on from the shows we have had several demonstrations. Notably GlaxoSmithKline (GSK) in Laval, Canada, who are currently trialing a TS-Series 0.75kW machine and have been very impressed by its ease of use. GSK in the UK have been one of our top customers for some time. They produce drugs to aid against a multitude of diseases such as asthma, HIV/AIDS, malaria, depression, migraine, diabetes, heart failure, digestive conditions and cancer. This laboratory works closely with their Belgian counterparts and we hope to be another tool for them to work with in the fight against disease.

The SCRIPPS Research Institute (where we already have a user with one of our machines, installed April 06) also expressed an interest in our technology to disrupt yeasts which they were having a tough time breaking. The laboratory is on a different campus to our existing users and is looking forward to being able to efficiently disrupt the hard walled yeast cells. The initial demonstration was successful and the lab is growing up batches of yeasts cells to compare the efficiency to other methods.

CONSTANT SYSTEMS Inc.



Lawrence Berkeley National Laboratory is a world renowned facility. A world renowned Molecular Biologist, John Tainer, is in the process of moving his new laboratory there. One of his students, Gareth Williams, hails from the University of St Andrew's in Scotland where he was very impressed by our system. Thanks to this he then recommended us to John Tainer and we promptly arranged a demonstration. This went very well with most of the lab trying out the system. Following good results we hope to receive an order which will further strengthen our presence amongst the top institutions in North America.

A recent visit to New England Biolabs who bought a machine at the end of last year brought news that they have submitted a paper for publishing. Our system was key for them to finish the paper and it was the research carried out following the demonstration which prompted the purchase of a system. Once published they will send us a copy as Constant Systems is mentioned in the method section of the article.

Total sales in North America have now surpassed the total for last year and we hope to have doubled the total number of machines sold by the end of this year. We have also taken a direct role in supporting and selling to the West Coast as well as the East over the past few months. The aim is to provide the best service possible to our existing and potential customers alike.

SCORE EUROPE INVEST IN NEW CNC MACHINERY



The machine shop at Peterhead's Wellbank facility is waiting patiently for the arrival of some new CNC machinery. Currently on order is a Hass VF3 machining centre and a Hass SL-30TSE lathe both of which are due for delivery in September. Another recent purchase is that of a Union CNC horizontal borer which will be here in 4 weeks time.

These machines will help to increase efficiency and productivity and save time on repeat jobs. They will also allow a more diverse range of jobs to be carried out.

SCOTTISH ENGINEERING CRAFT COMPETITION 2008



Chaperones visit the "synchrolift" facility at Peterhead Harbour Authority

This year's Scottish Engineering "First Year Apprentice" Craft Competition was once again held at Banff and Buchan College of Further Education on Tuesday 17 June. It's the ninth time that the college has run the competition, with sponsorship and support from Score Group plc, Scottish Engineering, SEMTA and EAL.

Almost 50 people attended a pre-competition dinner held at the Tufted Duck Hotel in St. Combs. The competitors and their chaperones enjoyed pre-dinner presentations from Nigel Cordiner of Score Training (*Score Apprenticeships*), Susan Andrews of Scottish Engineering (Engineering Scotland's Future) and Bob Sinclair, Principal of Banff & Buchan College (*B&BCFE Future*).



Gordon Milne tries his hand at blindfold driving!

Whilst the competitors were working hard all day at the competition, the chaperones enjoyed a tour of the Peterhead Harbour, hosted by David Buchan, Port Engineer. Some more fun outdoor activities also took place at Kingscliffe Sporting Lodge. This year's activities included blindfold driving, golf putting, formula one racing and archery. The winner of the activities trophy this year was our very own J. Bruce Buchan !



TEAM PHOTOS FROM AROUND THE WORLD...



Robert Murdoch and his team in Score Trinidad

Contact

Score Valves (Trinidad & Tobago) Limited
Unit D
DSM Warehouse Complex
Pacific Avenue Extension
Point Lisas
Trinidad
West Indies
Trinidad & Tobago
Tel: +1 868 (0) 679 0220

Knut Leif Forland and his team at Score A/S

Contact
Score A/S
Randabergveien 356
4070 Randaberg
Stavanger
Norway
Tel: +47 51412300

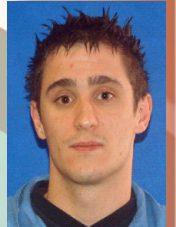


RALLY SUR DEL LAGO

Well we are ready for the 426 mile race which start on the **June 20th**, further to that we have the race number **20** that is sure to be a good omen.



Crew of Eugina are
Andy McClare (left), Works Director for Score Energy Inc, as captain
Sean McClare (right) as Able Seaman (he can actually throw an anchor out now without wrapping it round his neck)
Omar Flores (Machoro) which is a lizard as Marino.



Last Saturday's sea trials resulted in a burst sea water pipe joint and a defective engine cooling pump. Having rectified these issues with new components, yesterday's sea trials went well. We topped up at the end of the day to have 600 litres of 95 octane gasoline, 100 litres of treated water, no auxiliary tanks. We have camel packs to drink from while cooking in the Maracaibo sun, a great invention which allows you to suck the fluid from a cooled back pack while in motion without having to use your hands. This way, while bouncing around, you don't get covered in juice.

We have light weight sleeping bags and a jumbo mosquito net, being as the mosquitoes here don't just bite once they actually strafe you—leaving umpteen bites in one line, not very pleasant when they are carrying Dengue or other nasties.

We have 2 cameras and will get some good pictures for the Newsletter along the way, first leg is all the way up to the river Lemon to the Trompo restaurant, from there to the Sinamaica which is an Indian reservation. At this point we give toys to the young, poor children there and have a bite to eat. Then later on we set off to Isla de Toas where we spent the night.

Saturday is a 98 mile run to San Timoteo right at the other end of Lake Maracaibo!!!!!!! From there we will go up some tight rivers before heading back up to Paseo Del Lago.

Will keep you in the picture,

Tally Ho Tally Ho

Andy

Map of Lake Maracaibo



MEET THE APPRENTICE

Describe yourself in 20 words or less...
Happy, reliable, easy going, ambitious.

When you were a child, what did you really want to be when you grew up?
Wrestler.

Do you have any hobbies?
Watching/playing football.

What would you say is your biggest achievement in life to date?
Completing my training at the Training Centre in 9 months.

What one word do you use most often?
Magic!

Tell us your favourite saying...
Shut it!

What makes you smile?
Winding up Billy Higgins.

What makes you angry?
When nothing goes according to plan.

Other than "at home", what's your most favourite place in the world?
America.

What would you change if you could live your life again?
All my mistakes.

Who is the most famous person you have ever met?
Robin Williams, actor

Who would you most like to meet and why?
Danielle Lloyd—gorgeous.

If you could ask someone famous a question, who and what would you ask?
Danielle Lloyd, will you marry me?

What is the best lesson you ever learned?
Hard work pays off.

What advice would you give to someone still at school that wanted to become an Engineer or Administrative Trainee?
Give it a go, what have you got to lose?



JASON MCKINNON
Mechanical Trainee

MEET THE DIRECTOR

Describe yourself in 20 words or less...

Loyal, hard working, fair and always willing to help/learn others, and love humour.

When you were a child, what did you really want to be when you grew up?

I had a few ideas, one that sticks in my mind, I had a thing about being a Fireman.

Do you have any hobbies?

Not really, but been known to like a party!

What would you say is the biggest achievement in life to date?

Being myself and not trying to be someone that I am not.

What one word do you use most often?

Please and thank you, on a par.

Tell us your favourite saying...

Life is not a rehearsal, you only get one shot so make the best of it.

What makes you smile?

My baby son, just watching the real sense of achievement when he does something for the first time, it's a real delight. (and Ian Cheyne of course!)

What makes you angry?

I don't get angry, I find a solution.

Other than "at home", what's your most favourite place in the world?

My mother and father's, at 46 years old, they still feel the need to be looking after me.

What would you change if you could live your life over again?

Knowing what I know now, I would have applied myself more at school.

Who is the most famous person you have met?

Sir Alex Ferguson, a real hero.

Who would you most like to meet and why?

The Prime Minister and I would just like to tell him what I think of his TAX system.

If you could ask someone famous a question, who and what would you ask?

Fame does not really float my boat, but for the sake of answering this question; Sir Alex Ferguson again and I would ask him for a leaf out of his book. (Cheque book preferred).

What is the best lesson you have ever learned?

Respect your elders, and learn from them.

What advice would you give to someone still at school that wanted to become an Engineering or Administrative Trainee?

Be absolutely certain what you really want before you start any career, otherwise you waste your own time and many others time. Get out of the virtual world and into the real world, PSP, Playstation II and Xbox's are more likely to cause you harm than any benefit.



BILL URQUHART
Deputy Managing Director,
Score Europe

CYCLE TO WORK SCHEME

Score are currently considering taking part in a national Cycle to Work scheme promoted by a major bicycle retailer in the United Kingdom. Although final details have still be be verified, the scheme works in the following manner.

An employee wishing to partake in the scheme agrees to a set length of contract with the company who then purchase the bicycle from the retailer at a reduced rate. The bike is then leased to the employee along with any accessories that are required. The employee effectively rents the bike from the company but receives tax relief on it as it is for company business/commuting. As the bicycle is used for company business, it is classed as an asset therefore the company can claim VAT relief. At the end of the contract period, the employee can be given the option of purchasing the bicycle from the company for a reduced token price.

It is clear that this arrangement not only benefits the employee and company financially, but the significant health benefits of such a scheme are well worth considering.

If you would like more information on this, please contact either Conrad Ritchie or Chantelle Proctor.

THANK YOU

A big thank you goes out once again to everyone who submitted material for this edition of the newsletter. Without the support of all the authors and photographers around the Score Group who contributed their work, it would never have been possible to release such a diverse publication. Many thanks to you all and we look forward to receiving your further contributions for the next issue

*Kindest Regards,
Newsletter Team
Score Group plc*