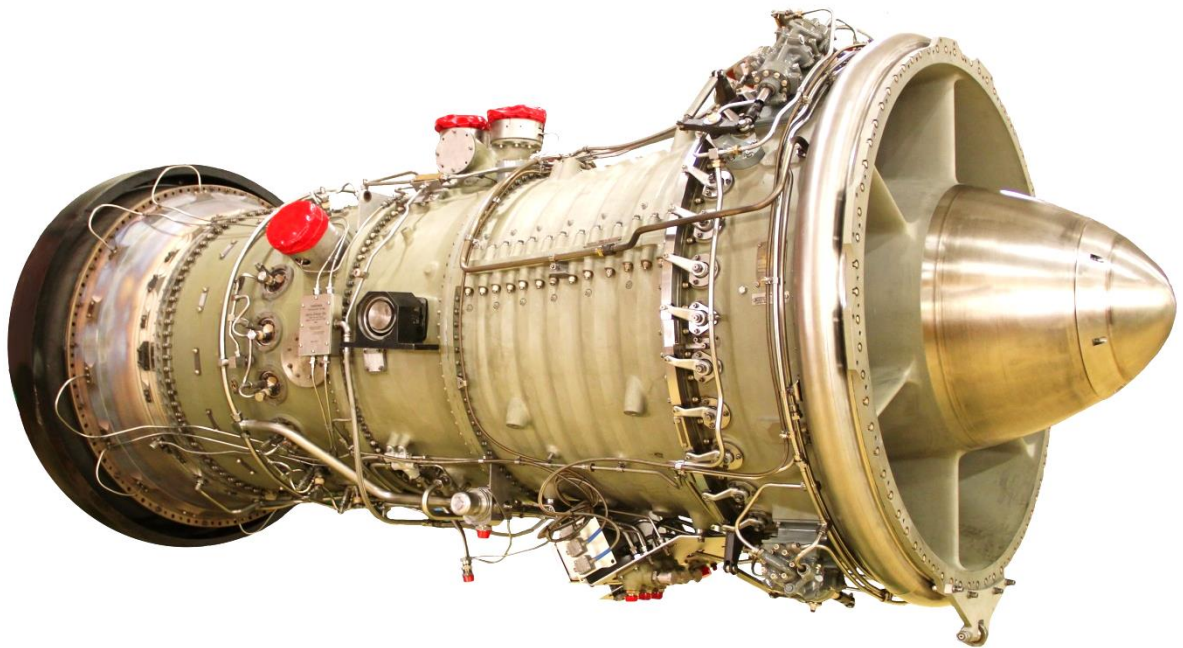




Score *Energy Limited*

Intelligent Gas Turbine Solutions™

www.score-energy.com



RB211 Stock Availability

Rolls-Royce RB211-24G Gas Turbine Engine

T: + 44 (0) 1779 482300
E: turbinesystems@score-group.com

Summary

Score Energy stock RB211 engines and modules for sale or service exchange. All units come complete with full service history and certification.

General Details

Engine Type:	Rolls-Royce RB211, Type 24C and G Gas Turbine Engine
Fuel Type:	Dual fuel, gas or liquid
Current condition of engines / modules:	Fully overhauled
Availability:	In stock

Hours Run / Starts

Total hours since last overhaul:	0
Total starts since last overhaul:	0

Engine History

Date of last overhaul:	September 2012
Date of most recent test & inspection:	September 2012
Inclusions:	Documentation includes the engine log books, maintenance manuals and overhaul reports. The engine / modules are complete. Transport cradle and storage bag can also be provided.

Location of engine / modules:	The engines / modules are located at Score Energy Limited facility in Peterhead, North East Scotland.
-------------------------------	---

All units are available for inspection at:

Score Energy Limited
Ian M Cheyne Building
Glen Test Facility
Wellbank
Peterhead
Aberdeenshire
AB42 3GL
United Kingdom

More information:	Contact: David Moir Tel: +44 (0)1779 482376 E-Mail: david.moir@score-group.com
-------------------	---

Gallery



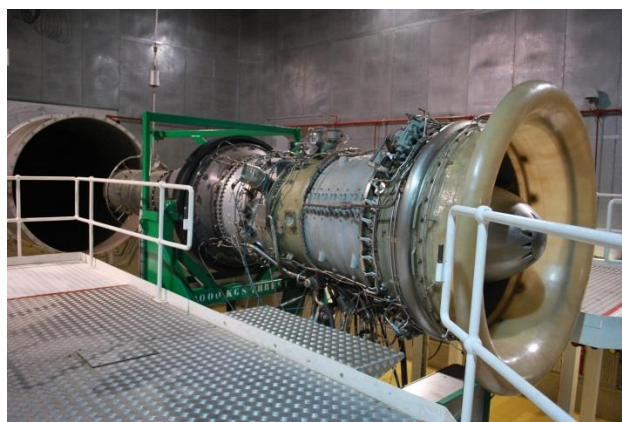
Engine in transportation cradle (1)



Engine in transportation cradle (2)



Engine within test cell (1)



Engine within test cell (2)

[RB211 Stock Module Video - Click Here](#)

